

# INTRODUCTION

## INTRODUCTION

For more than 30 years, ODYNE has focused on innovative product development. Today, we provide a full portfolio of HVAC/R products from Fan Coil Units to large centrifugal chillers as well as many other innovative green solutions. Our commitment to innovation, matched with an aggressive attitude toward growth, makes ODYNE a leader in global markets. Our product development is tailored to meet the specific needs of customers, building-by-building, country-by-country and region-by-region. No other HVAC/R manufacturer takes this approach to meeting your performance expectations.

DKR3, Modular Central Station Air Handling Units, have an air volume range from 1000 to 12,300 cfm (1700 to 21,000 m<sup>3</sup>/hr) with new extruded aluminum frame profile. The entire product line features rigid construction, installation ease, control flexibility, high reliability and versatile functions, which is suitable for both commercial and industrial applications.

## FEATURES

The DKR3 range of Air Handling Units features an extruded aluminium frame profile that provides a high level of unit design and application flexibility necessary to meet the rising demand for improved Indoor Air Quality. The unit is constructed using rigid nylon corners and double skin polyurethane foam insulated panels. These units can be disassembled for shipment and reassembled at site. Internal joints are insulated with rigid PVC strip and PE foam to provide air-tight casing and minimize cold bridging.

The DKR3 range is available in 8 models in horizontal and vertical formats with a wide range of options and accessories that can be selected from the ODYNE electronic catalogue. DKR3 Air handling Units can be configured to meet the requirements of all standard and many specialised applications.



## MEETING IAQ DESIGN REQUIREMENT

Double Skin “Sandwich” panel construction has smooth inner surfaces for easy and effective cleaning to reduce risk of dirt and bacteria accumulation. The sandwich panels are injected with Polyurethane foam of 40kg/m<sup>3</sup> density. Panel of nominal 1” and 2” thickness are available. The external surface of all panels with 0.5 mm high strength pre-painted and 0.5 mm galvanized steel (GI) as internal skin.

# DESIGN

## QUICK SERVICE ACCESS

Access panels are easily removable by screwed type panel lock. Hinged access is also available.

## YOUR CHOICE OF FILTRATION

Various options of filter type, filter media and filter efficiency are available to meet the different air quality requirement.

## YOUR CHOICE OF COILS

Chilled water and DX cooling coils are manufactured from copper tubes with aluminum fins, copper fins, hydrophilic coated fins or other custom made coils. Heating can be hot water coil or electric heaters.

Three-way pitch drain pan design discharges condensate quickly and prevents microbial growth. Condensate pans of 304 stainless steel material are also available as an option.

## YOUR CHOICE OF BLOWER

Forward, Backward Inclined and Backward Airfoils Centrifugal fans which are AMCA certified are available. You can select class I, II or III fans to meet your required air flow, static pressure, performance and sound power.

Blower shall be coupled with pulley and motors.

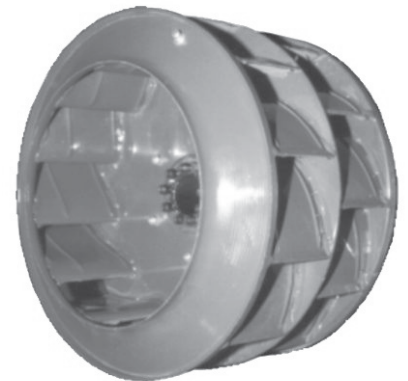
### Air Tight Screwed Compression Latch



### Forward Curved Fan Wheel (FS)



### Airfoil Fan Wheel (AF)



## MAXIMUM AIRFLOW

Model Size	12	22	32	40	48	64	80	100
Max. CFM [m³/hr]	1667 [2833]	2667 [4532]	3896 [6620]	4813 [8178]	5729 [9735]	7563 [12851]	9625 [16355]	12375 [21028]